



# TOOLBOX TALK



## TOPIC DISCUSSED:

### TOWER CRANE ANATOMY



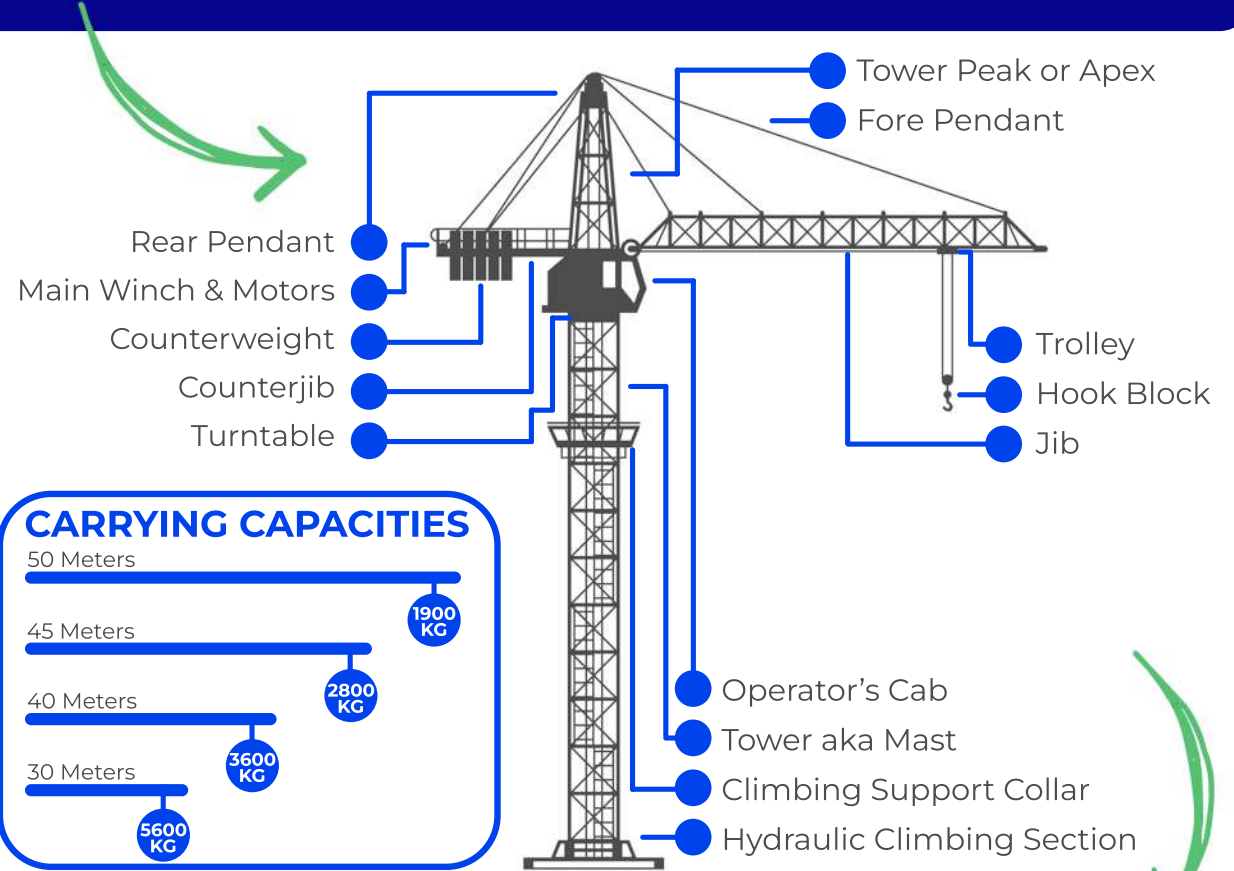
Safely deploying tower cranes on construction sites is critical to raising the pace of the project through higher productivity, however, any non-compliance with the numerous safety regulations will have the opposite effect.



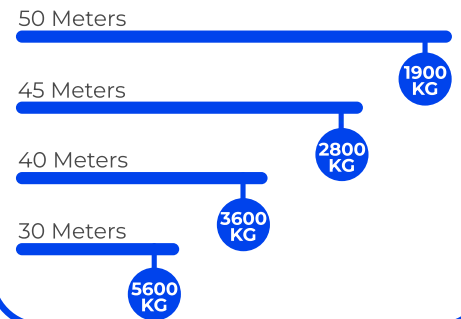
## QUESTIONS:

1. Which regulations should you refer to when considering the legal requirements for tower cranes?
2. Where does the crane operator spend most of their time performing their duties/operating the crane?
3. True or False - Anyone on the construction site may design and erect a tower crane.

## THE ANATOMY OF A TOWER CRANE & THE LEGAL REQUIREMENTS



### CARRYING CAPACITIES



A crane **COUNTERWEIGHT** aims to keep the crane from **TIPPING OVER**. The counterweight is used to **BALANCE** the weight of the object being lifted.



## LEGAL COMPLIANCE



Tower Crane must be designed and erected under the supervision of a competent person.



A Relative risk assessment and method statement must be developed and applied.



Effects of wind forces on the crane must be considered.



Wind speed device fitted with audible warning when wind speed exceeds designer's spec.



The bases must be firm level and secured.



### REFER TO:

CONSTRUCTION REGULATIONS 22

DRIVEN MACHINERY REGULATIONS 18

TOWER CRANE

LIFTING COMPONENTS

