



TOOLBOX TALK



TOPIC DISCUSSED:

SPOTTER SAFETY



Construction sites utilize a range of heavy machinery, from semi-trucks to bulldozers and cranes, all requiring skilled drivers. Even experienced drivers need spotters due to blind spots. Spotters help scan areas, ensuring safety by alerting drivers to potential hazards. Their role is crucial for site safety.



QUESTIONS:

1. How should a spotter and operator communicate with one another?
2. May spotters perform other tasks while performing spotter duties?
3. What should other workers do when around heavy vehicles?

TAKE A LOOK AT THE FOLLOWING:

A spotter is an individual assigned to OBSERVE AND GUIDE

equipment operators and drivers to ensure a safe work environment. While in this role, a spotter cannot perform other job tasks.



DUTIES:



Have an unobstructed view of the operator's **BLIND SPOTS.**



Ensure ample **STOPPING** distance and clearance for safety.



Use consistent **HAND SIGNALS** or other clear communication methods due to noise.



Maintain visibility to the operator; they can't see you if **YOU CAN'T SEE THEM.**



Be cautious in the operator's blind spots; **COMMUNICATE** your actions clearly.



Avoid distractions and maintain **EYE CONTACT** before signalling.

OTHER WORKERS

BE SURE YOU'RE SEEN:

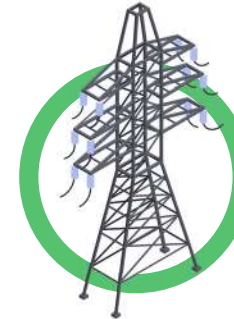
Make eye contact with the spotter/driver/operator.

Only move after you get the signal it's safe to pass.

WHEN TO USE A SPOTTER



Poor visibility.



Overhead power lines, overhead obstructions and other obstructions present a hazard.



Pedestrians, coworkers, vehicle traffic, or other contractors are on or in the work area or roadways.



Moving equipment or materials in close proximity to an excavation.

