



TOOLBOX TALK



TOPIC DISCUSSED:

NOISE-INDUCED HEARING LOSS



Construction workers hold significant stakes, operating within an environment widely acknowledged as hazardous. Ensuring their health and safety stands as an utmost priority. Amidst the array of risks they encounter, construction noise emerges as a formidable adversary. Beyond merely disturbing neighboring communities, it poses a threat to the well-being and productivity of workers, potentially leading to stress and hearing impairments.



QUESTIONS:

1. What is noise-induced hearing loss?
2. True or False - Noise levels are measured linearly.
3. Name at least three control measures.

TAKE A LOOK AT THE FOLLOWING:

WHAT IS NOISE-INDUCED HEARING LOSS?



It's when damage occurs to **INNER EAR** structures and nerve fibers that respond to sound.

This condition, caused by loud noise exposure, it can't be treated.

CONTROL MEASURES



Barriers between machines & workers.



Maintain PPE equipment.



Prioritise quieter tools & equipment.



Limit workers exposure to high noise.

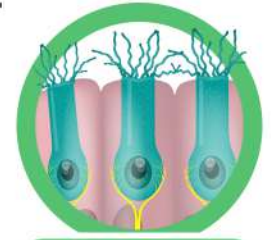


Rotate work tasks.



Establish quiet or enclosed break areas.

COCHLEA



DAMAGED



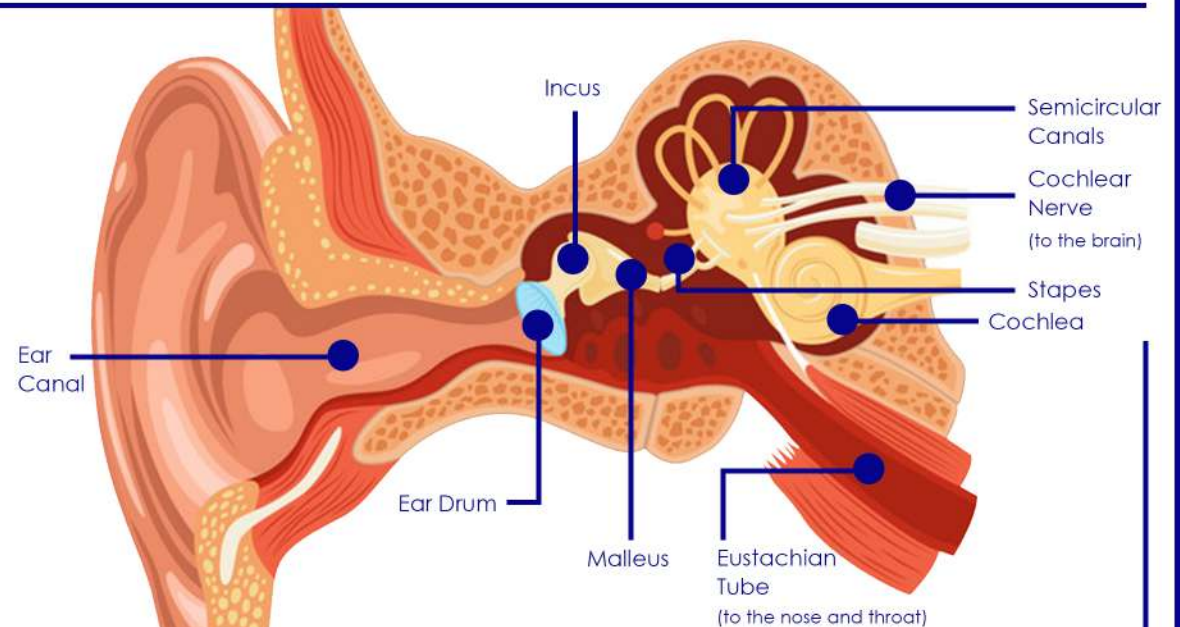
HEALTHY

Noise levels are measured in decibels (dB). Decibels are not linear measurements.

The difference in energy between 100 decibels and 110 is not 10% -

IT'S 100 TIMES THE SOUND LEVEL PRESSURE.

EAR ANATOMY



OUTER EAR:

MIDDLE EAR:

INNER EAR:

