



TOOLBOX TALK



TOPIC DISCUSSED:

PROJECT SHUTDOWN CHECKLIST



As we prepare for a project shutdown, it is essential to secure the site, protect equipment, and address all safety and environmental risks. A thorough approach prevents hazards, protects assets, and ensures a smooth restart when operations resume.



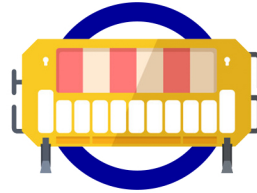
QUESTIONS:

1. Why is it important to secure barricades around edges, openings, and excavations before a site shutdown?
2. What measures should be taken to protect electrical equipment from flooding during a shutdown?
3. What should be done with machinery and tools left on-site during a shutdown?

TAKE A LOOK AT THE FOLLOWING:

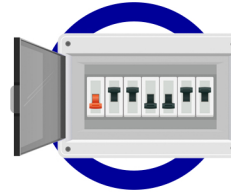
KEY AREAS TO ADDRESS

BARRICADING AND FALL PROTECTION:



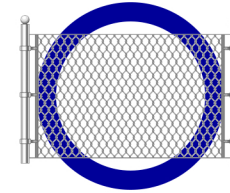
Secure barricades, cover openings, tag scaffolding, and store fall protection equipment safely.

ELECTRICAL SAFETY:



Inspect installations, secure exposed power points, and lock DB boards with proper protections.

CONSTRUCTION SITE SECURITY:



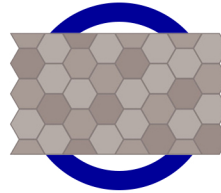
Check fencing, secure entry points, display safety signage, and update emergency contacts.

MACHINERY AND EQUIPMENT:



Lock away or secure tools and machinery, remove keys, and ensure equipment is in good condition.

PUBLIC SAFETY:



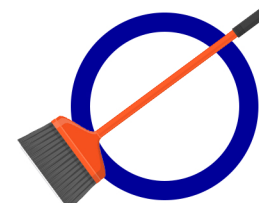
Clear public walkways and address hazards like unsecured trenches or cavities.

HAZARDOUS CHEMICALS:



Secure chemicals in ventilated storage, label containers, and provide spill kits.

HOUSEKEEPING:



Remove loose materials, clear waste piles, and organize laydown areas before shutdown.

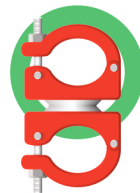
FIRE PREVENTION AND EMERGENCY PREPAREDNESS:



Position fire extinguishers, ensure emergency lighting works, and communicate plans to staff.

FINAL CHECKLIST

SCAFFOLDING:



Tag all scaffolds correctly and remove loose materials from platforms.

FIRST AID KITS:



Inspect first aid kits and ensure they are fully stocked and available.

SITE FACILITIES:



Portable toilets and ablution facilities should be cleaned, secured, and accessible for security.

